
SimLink® / Magmasoft® **Instruction**



Why SimLink® ?

SimLink® enables the Magmasoft® user to import their individual riser portfolio via a direct connection between Magmasoft® and the GTP ToolBox.®

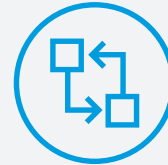
From there, the risers can be positioned directly on the component. The import provides the user with finished MGO data sets, which allows for drag & drop positioning of the risers on the corresponding component position.

The complete portfolio

With SimLink®, the user imports the complete GTP portfolio into Magmasoft®. All of the feeders from the general catalogue are imported along with all special geometries associated with the user account.

Always up to date

If a feeder is added to the GTP portfolio of the user account as part of a sampling or serial feeder, the user will immediately receive a notification that an update of the portfolio is available. The corresponding import can then be processed.



Direct connection of the GTP ToolBox data with MAGMA®



Finished mgo data files



Download the MAGMA® Feeder Catalog directly



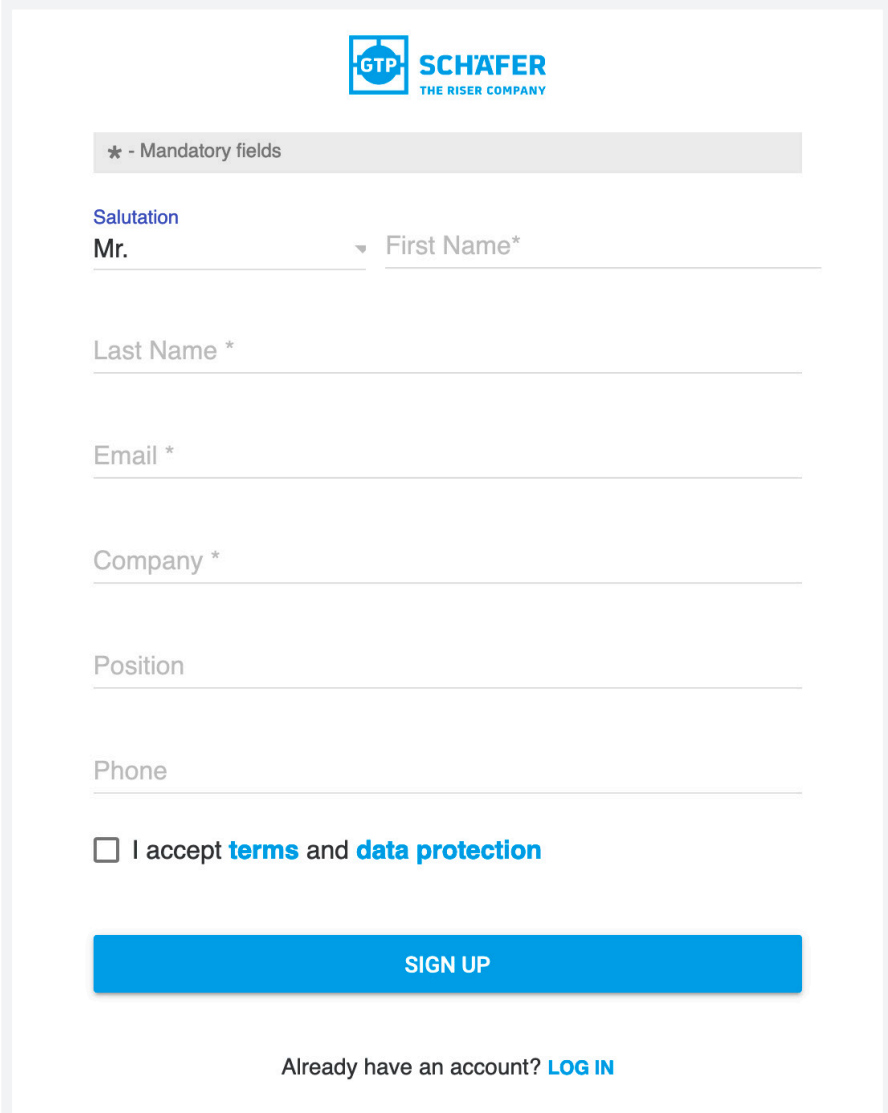
Automatic notification of updates



Cost and royalty-free

Step 01.

Registration within the GTP ToolBox under the following link:
<http://www.gtp-toolbox.com/Account/signUp>

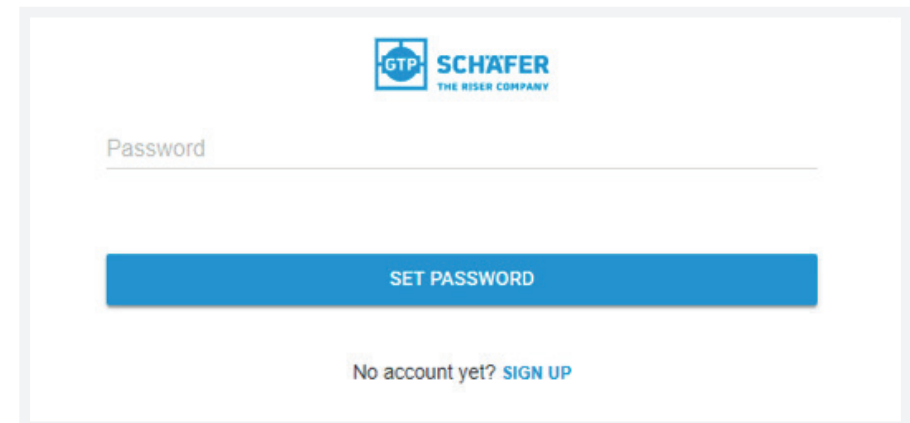
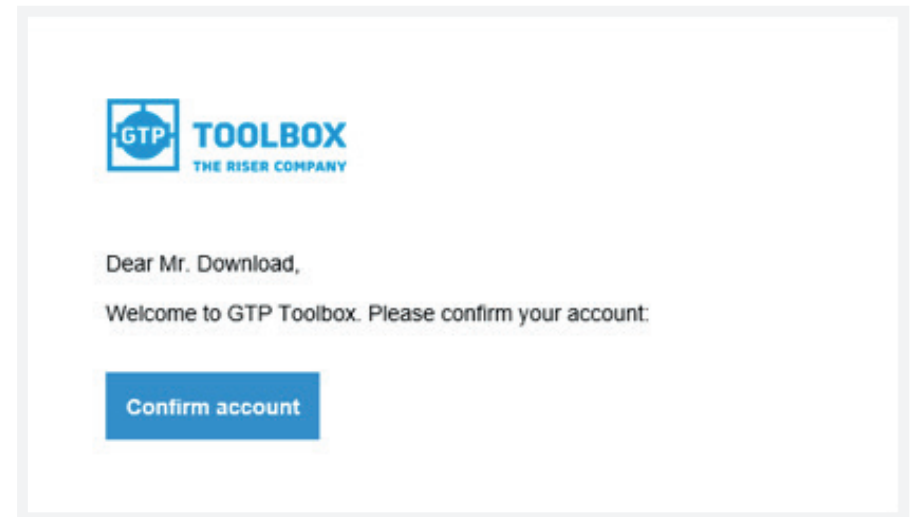


The screenshot shows a registration form for GTP Schäfer. At the top right is the logo for GTP Schäfer, with the tagline 'THE RISER COMPANY'. Below the logo is a grey bar with the text '* - Mandatory fields'. The form contains several input fields: 'Salutation' with a dropdown menu currently showing 'Mr.', 'First Name*' (mandatory), 'Last Name *' (mandatory), 'Email *' (mandatory), 'Company *' (mandatory), 'Position', and 'Phone'. Below these fields is a checkbox labeled 'I accept terms and data protection'. At the bottom of the form is a large blue button labeled 'SIGN UP'. Below the button, there is a link: 'Already have an account? LOG IN'.

Step 02.

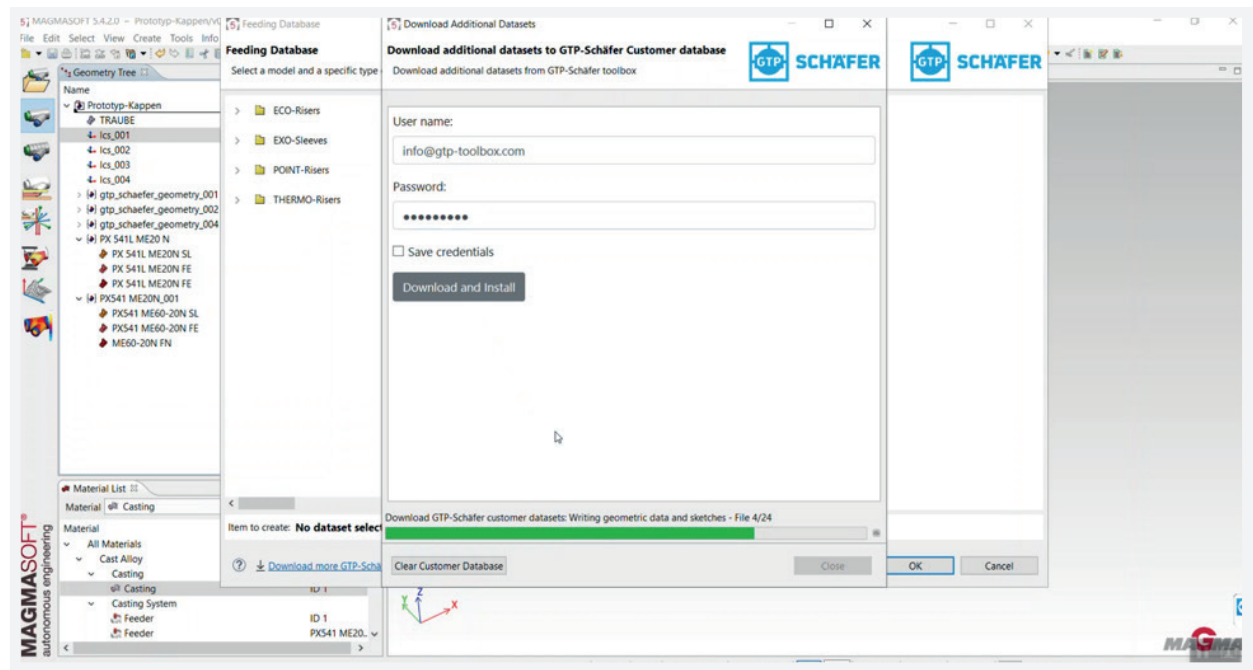
After registration, the user will receive an e-mail notification to confirm the registration of the account and to assign the password.

With this step, the registration in the toolbox is completed. Activation takes place within 24 hours.



Step 03.

Log in with your GTP ToolBox user account to access the GTP catalogue in MAGMA®. Your personal portfolio will be automatically transferred to the folder „My GTP Portfolio“.

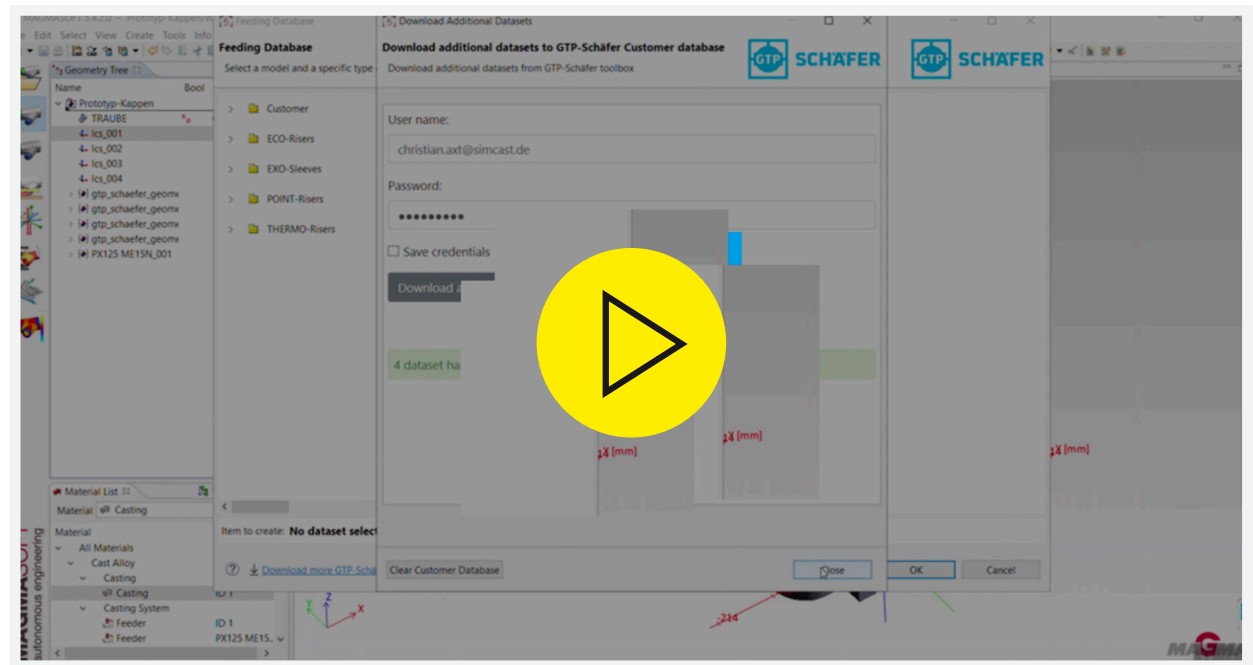




Additional Information

Video Tutorial

The video tutorial for using SimLink® in Magmasoft® at:
www.gtp-schaefer.com/simlink



Import

Individual mgo data files can also be imported directly from the ToolBox and used for the desired simulation.

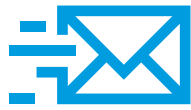
Type	Modulus [cm]	Volume [cm ³]	Height [mm]	Outer Diameter [mm]	Contact Area [mm]	Files
TG 69	0,75	9	60	52	30	Download
TG 70	0,75	10	85	66	38	Download
TG 120L	0,85	16	50	60	38	Download
TG 120	0,85	16	65	60	38	Download
TG 124	0,85	8	65	60	38	Download pdf igs stl stp mgo pdf (int)
TG 125	0,85	14	65	60	45	Download
TG 126L	0,85	27	0	0	38	Download
TG 190	0,95	28	85	60	38	Download
TG 195L	0,95	26	85	60	45	Download
TG 195	0,95	26	85	60	45	Download
TG 160	1,2	22	85	66	38	Download
TG 160 C	1,2	22	85	66	38	not available



FAQ

Here you will find answers to frequently asked questions.

What happens after registration with SimLink® or the GTP ToolBox?



You will receive an e-mail with a link to set your personal password.



In the next step, GTP Schäfer will assign you to your company within 24 hours so that you can access your company-related portfolio data in future.



After your user account is activated, you can start importing your portfolio.

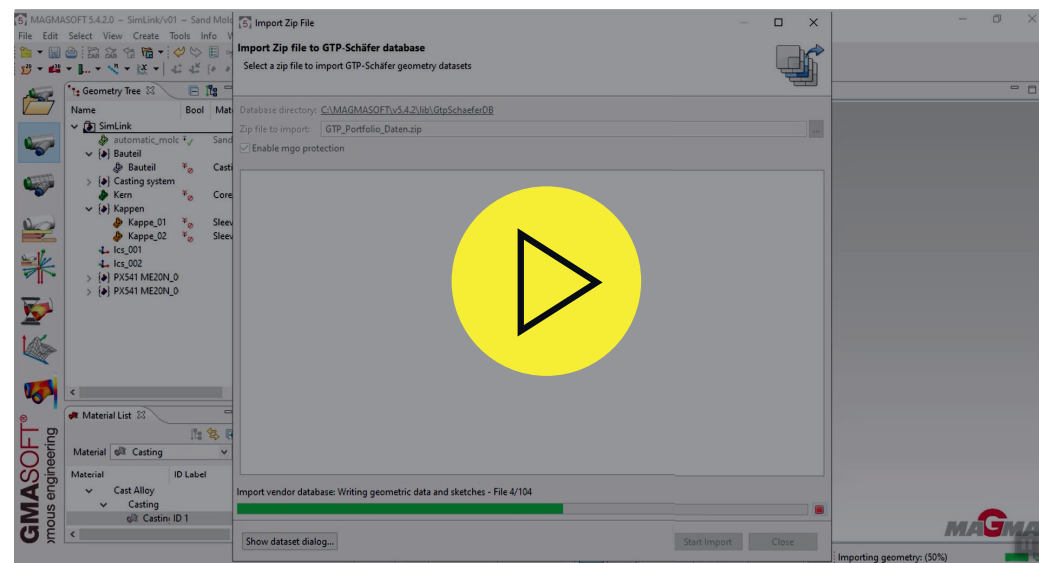


What is the GTP ToolBox?

GTP Schäfer has developed an online tool which offers GTP Schäfer customers a variety of services. In addition to all product-related data (2D, 3D, MSDS, TDS, etc.), it contains details on sampling, visit reports, open to-dos and other valuable information.

How can I import my GTP portfolio if my MAGMA® computer is not connected to the Internet?

Please go to www.gtp-toolbox.com with your internet-enabled computer and log in there. In the next step you can download your portfolio as a zip file and import it into MAGMASOFT®. You can see how this works in the video.



Which material data should I use to simulate GTP Schäfer exothermic risers?

Please select the data set „GTP_THERMEX“
and the relevant HTC values:

Name: GTP HTC Cast-EXO

Description: Heat Transfer Coefficient (HTC) from liquid metal
in riser to exothermic material

Name: GTP HTC EXO-Mold

Description: Heat Transfer Coefficient (HTC) from exothermic
material to molding sand



Benzstraße 15
41515 Grevenbroich
+49 2181 23394-0
info@gtp-schaefer.de
www.gtp-schaefer.com